

focus[®]



Quality. Quality. Quality.

REMANUFACTURED Inkjet Cartridges

HP[®] | Dell[®] | Lexmark[®] | Canon[®] | Epson[®] | Sharp[®]
Xerox[®] | Compaq[®] | Brother[®] | Pitney Bowes[®]



TRI COLOR INKJET CARTRIDGE

Recycled Remanufactured in the USA



About Planet Green

Planet Green is an industry leader of wholesale high-quality remanufactured inkjet cartridge products. Since the company's creation over a decade ago, quality has been, and continues to be, the focus of every single activity in the company.

Our mission is to create quality products, quality services and quality relationships. With these guiding values, Planet Green continues to be the partner of choice for customers who expect nothing but the best.

Our certified state-of-the-art 35,000-square foot facility, based in California USA, exemplifies streamlined production and remanufacturing excellence. We continue to create our own manufacturing techniques and production equipment.

Utilizing leading-edge technology and top-quality supplies enables us to uphold our high standards of quality. The passion for continuous research, development and innovation keeps us among the best of the best in an industry full of poor-quality products and sub-par remanufacturers.

Our professional management team, well-trained technicians and dedicated staff are yet another reason for our continued growth and success. They are the cornerstone for producing and delivering top-quality products and superb service to satisfied customers all over the world.

Go with Planet Green and entrust your future to a company that has a true image of quality.





Planet Green's Focus Brand remanufactured Inkjet Cartridges epitomize the quality and performance that your customers expect and count on. The Focus Brand conveys a clear cut message of high standards with a commitment to environmental responsibility.

Focus Brand Cartridges are the result of continuous investment, improvement and advancement of our employees, technology, systems & procedures as well as today's customer expectations. We are tireless in discovering and innovating new ways to produce a better inkjet cartridge, and the Focus Brand Cartridges are the result of that effort.

Performance

Focus Brand Inkjet Cartridges provide consistent and reliable performance down to the last ink drop. After all, our quality control and testing departments do not work for us; they work for our customers and have their full satisfaction in mind all the time. Our concentration on perfecting just inkjet cartridges allows us to perfect the remanufacturing process and the resulting product.

Value

For many years now Planet Green's Inkjet Cartridges have been considered an effective alternative to the expensive OEM cartridges, as well as the flood of sub-par and unreliable remanufactured cartridges on the market today. Focus Brand Inkjet cartridges meet the quality & performance of the OEM's at substantial savings to your customers.

Quality

When it comes to our main philosophy, "Quality, Quality, Quality" would be it, and the proof is on the printed page. Focus Brand inkjet cartridges are produced under stringent quality-control procedures and strict testing guidelines. They are the best remanufactured inkjet cartridges on the market.





State-of-the-Art Manufacturing

Production

- 35,000 sq ft advanced remanufacturing facility
- Five separate departments with designated staff for empties, cleaning, filling, testing and packaging
- Efficient work flow and production planning
- Rigorous training program for production staff & line managers
- Organized and spotless production floor

Stringent Production Procedures and Guidelines

- Strict production policy of using ONLY Virgin cores that must pass visual & circuit testing
- Using cartridge-specific inks formulated in the USA
- All cartridge caps are ultra-sonic welded
- Extensive testing procedures for every cartridge

Leading-Edge Equipment and Technology.

- Colorfill 600 vacuum-filling machines for every cartridge station
- Dedicated in-house machine shop creating our own PG-Innovation line of automated equipment including:
 - High-tech cartridge cap removal
 - Black & color flushing systems
 - Automated filter/screen remover
 - Automated filter welders
 - Cartridge foam dryers
 - Centrifuge systems
 - Multiple custom-built Delran cleaning sinks
 - Numerous task-specific hand-held tools



Quality. Quality. Quality.

Research & Development



At Planet Green continuous advancement and improvement is the result of our vigorous research and development efforts. Process engineering, production planning, automation, new technological advancements, chemical analysis, product testing and advanced technical training are only a few areas of concentration and investment.



We know the importance of investing in our future. Introducing new models, staying ahead of the technological curve and forecasting industry trends enables us to stay at the top of the remanufacturing industry. We believe in never-ending research, learning and improvements. With this attitude we can ensure that our customers have every competitive advantage to succeed.

Quality Assurance

As our Research & Development team implements quality into our products and procedures, our quality assurance team ensures that quality is consistent and guaranteed. The QA team is set up as an independent department with only the interest and expectations of the customer in mind. The proof of this set-up is demonstrated in every printed sheet that uses Planet Green cartridges.

Having solid knowledge of the inner workings of every cartridge allows us to construct our QA & testing procedures to make certain our cartridges perform to the same specifications as the original equipment manufacturer brand. Testing includes lifetime performance, duration, color breadth, and page yields.

QA Highlights

- Independent Equipment Development
- Impartial Laboratory Testing
- Pre-Certification of Vendor Supplies and Material
- Lot Inspections of Supplies and Materials
- Every Cartridge is print-tested before Packaging
- In-House Production of all Inkjets
- No Outsourcing of Units
- Monthly Quality and Procedural Evaluations
- Yearly Vendor Re-Qualification Testing





Product Catalog

Hewlett Packard® >>>

PG-Part #	OEM#	Type
PG-C8721	02	●
PG-C8771	02	●
PG-C8772	02	●
PG-C8773	02	●
PG-C8774	02	●
PG-C8775	02	●
PG-C8719	02XL	●
PG-C8730	02XL	●
PG-C8731	02XL	●
PG-C8732	02XL	●
PG-C8733	02XL	●
PG-C8734	02XL	●
PG-C4844	10	●
PG-C4841	10	●
PG-C4842	10	●
PG-C4843	10	●
PG-C4836	11	●
PG-C4837	11	●
PG-C4838	11	●
PG-C4804	12	●
PG-C4805	12	●
PG-C4806	12	●
PG-C4814	13	●
PG-C4815	13	●
PG-C4816	13	●
PG-C4817	13	●
PG-C5011	14	●
PG-C5010	14	●
PG-C6615	15	●
PG-C1816	16	●
PG-C6625	17	●
PG-C6628	19	●
PG-C6614	20	●

PG-Part #	OEM#	Type
PG-C9351	21	●
PG-C9352	22	●
PG-C1823	23	●
PG-51625	25	●
PG-51626	26	●
PG-C8727	27	●
PG-C8728	28	●
PG-51629	29	●
PG-51640	40	●
PG-51641	41	●
PG-51645	45	●
PG-51649	49	●
PG-C6656	56	●
PG-C6657	57	●
PG-C6658	58	●
PG-C9359	59	●
PG-CC640	60	●
PG-CC643	60	●
PG-CC641	60XL	●
PG-CC644	60XL	●
PG-CH561	61	●
PG-CH562	61	●
PG-CB335	74	●
PG-CB336	74XL	●
PG-CB337	75	●
PG-CB338	75XL	●
PG-C6578	78	●
PG-C4872	80	●
PG-C4874	80	●
PG-C4873	80	●
PG-C4871	80XL	●
PG-C4846	80XL	●
PG-C4847	80XL	●

Quality. Quality. Quality.

Hewlett Packard® >>>

PG-Part #	OEM#	Type
PG-C4848	80XL	●
PG-C4930	81	●
PG-C4931	81	●
PG-C4932	81	●
PG-C4933	81	●
PG-C4934	81	●
PG-C4935	81	●
PG-CH565	82	●
PG-C4911	82	●
PG-C4912	82	●
PG-C4913	82	●
PG-C4940	83	●
PG-C4941	83	●
PG-C4942	83	●
PG-C4943	83	●
PG-C4944	83	●
PG-C4945	83	●
PG-C5016	84	●
PG-C9425	85	●
PG-C9426	85	●
PG-C9427	85	●
PG-C9428	85	●
PG-C9429	85	●
PG-C9385	88	●
PG-C9396	88XL	●
PG-C9391	88XL	●
PG-C9392	88XL	●
PG-C9393	88XL	●
PG-C9362	92	●
PG-C9361	93	●
PG-C8765	94	●
PG-C8766	95	●
PG-C8767	96	●

PG-Part #	OEM#	Type
PG-C9363	97	●
PG-C9364	98	●
PG-C9369	99	●
PG-C9368	100	●
PG-C9360	102	●
PG-CB304	110	●
PG-CB316	564	●
PG-CB318	564	●
PG-CB319	564	●
PG-CB320	564	●
PG-CB317	564	●
PG-CB321	564XL	●
PG-CB323	564XL	●
PG-CB324	564XL	●
PG-CB325	564XL	●
PG-CB322	564XL	●
PG-CC635	701	●
PG-CC653	901	●
PG-CC656	901	●
PG-CC654	901XL	●
PG-CD971	920	●
PG-CH634	920	●
PG-CH635	920	●
PG-CH636	920	●
PG-CD975	920XL	●
PG-CD972	920XL	●
PG-CD973	920XL	●
PG-CD974	920XL	●
PG-C4906	940XL	●
PG-C4907	940XL	●
PG-C4908	940XL	●
PG-C4909	940XL	●
PG-C6602A	-	●



Product Catalog

Hewlett Packard® >>>

PG-Part #	OEM#	Type
PG-C6602B	-	●
PG-C6602G	-	●
PG-C6602R	-	●
PG-C8842	-	●

PG-Part #	OEM#	Type
PG-C6195	-	●
PG-C6168	-	●
PG-Q7485	-	○

Lexmark® >>>

PG-Part #	OEM#	Type
PG-18C0781	1	●●●
PG-18C0190	2	●●●
PG-18C1530	3	●
PG-10N0016>>>	16	●
PG-10N0217	17	●
PG-15M0120	20	●●●
PG-10N0026>>>	26	●●●
PG-10N0227	27	●●●
PG-18C0031	31	●●●
PG-18C0032	32	●
PG-18C0033	33	●●●
PG-18C0034	34	●
PG-18C0035	35	●●●

PG-Part #	OEM#	Type
PG-18Y0143	43XL	●●●
PG-18Y0144	44XL	●
PG-17G0050>>	50	●
PG-17G0060>>	60	●●●
PG-12A1970>>	70	●
PG-12A1980>>	80	●●●
PG-18L0032>>	82	●
PG-18L0042>>	83	●●●
PG-18L0000	88	●●●
PG-12A1990	90	●●●
PG-13400HC	-	●
PG-13619HC	-	●●●

All units marked with (») are packaged and sold as combo units.

- Lex 10N0016/Dell T0529
- Lex 10N0026/Dell T0530
- Lex 12A1970/17G0050
- Lex 12A1980/17G0060
- Lex 18L0032/Dell 7Y743
- Lex 18L0042/Dell 7Y745

Quality. Quality. Quality.



PG-Part #	OEM#	Type
PG-N5878	Series 1	●
PG-N5882	Series 1	●●●
PG-T0529>>	Series 1	●
PG-T0530>>	Series 1	●●●
PG-7Y743>>	Series 2	●
PG-7Y745>>	Series 2	●●●
PG-J5566	Series 5	●
PG-J5567	Series 5	●●●
PG-M4640	Series 5	●
PG-M4646	Series 5	●●●
PG-J4844	Series 5	●●●
PG-JF333	Series 6	●●●
PG-DH828	Series 7	●
PG-DH829	Series 7	●●●
PG-CH883	Series 7	●

PG-Part #	OEM#	Type
PG-CH884	Series 7	●●●
PG-FH214	Series 7	●●●
PG-MJ264	Series 8	●
PG-MK990	Series 9	●
PG-MK991	Series 9	●●●
PG-MK992	Series 9	●
PG-MK993	Series 9	●●●
PG-MK995	Series 9	●●●
PG-KX701	Series 11	●
PG-KX703	Series 11	●●●
PG-CN594	Series 11	●
PG-CN596	Series 11	●●●
PG-WP322	Series 15	●
PG-UK852	Series 15	●●●

All units mark with (*) are packaged and sold as combo units.

Lex 10N0016 / Dell T0529

Lex 10N0026 / Dell T0530

Lex 12A1970 / 17G0050

Lex 12A1980 / 17G0060

Lex 18L0032 / Dell 7Y743

Lex 18L0042 / Dell 7Y745



PG-Part #	OEM#	Type
PG-8R7881	-	●
PG-8R7880	-	●●●
PG-8R12591	-	●●●



PG-Part #	OEM#	Type
PG-337709-001	-	●
PG-337710-001	-	●●●
PG-337711-001	-	●●●
PG-337714-001	-	●
PG-337715-001	-	●●●



Product Catalog

Canon® >>>

PG-Part #	OEM#	Type
PG-BC-02	-	●
PG-BC-05	-	●●●
PG-BC-20	-	●
PG-BX-3	-	●
PG-PG-30	-	●
PG-CL-31	-	●●●
PG-PG-40	-	●
PG-CL-41	-	●●●
PG-PG-50	-	●
PG-CL-51	-	●●●
PG-CL-52	-	●●●
PG-PG-210	-	●
PG-CL-211	-	●●●
PG-PG-210XL	-	●
PG-CL-211XL	-	●●●
PG-PGI-220	-	●
PG-CLI-221	-	●
PG-CLI-221	-	●
PG-CLI-221	-	●

PG-Part #	OEM#	Type
PG-CLI-221	-	●
PG-BCI-3eBk	3e	●
PG-BCI-3eC	3e	●
PG-BCI-3eM	3e	●
PG-BCI-3eY	3e	●
PG-BCI-6Bk	6	●
PG-BCI-6C	6	●
PG-BCI-6M	6	●
PG-BCI-6Y	6	●
PG-BCI-6PC	6	●
PG-BCI-6PM	6	●
PG-PGI-5	-	●
PG-CLI-8 K	-	●
PG-CLI-8 C	-	●
PG-CLI-8 M	-	●
PG-CLI-8 Y	-	●
PG-CLI-8 PC	-	●
PG-CLI-8 PM	-	●

Sharp® >>>

PG-Part #	OEM#	Type
PG-UX-C35B	-	●
PG-UX-C70B	-	●
PG-UX-22BC	-	●
PG-UX-27CC	-	●●●

PG-Part #	OEM#	Type
PG-AJ-C50B	-	●
PG-AJ-C50C	-	●●●
PG-FO-21BC	-	●
PG-FO-C60B	-	●

Quality. Quality. Quality.



PG-Part #	OEM#	Type
PG-T040120	T040	●
PG-T041020	T041	●●●
PG-T043120	T0431	●
PG-T044120	T0441	●
PG-T044220	T0442	●
PG-T044320	T0443	●
PG-T044420	T0444	●
PG-T048120	T0481	●
PG-T048220	T0482	●
PG-T048320	T0483	●
PG-T048420	T0484	●
PG-T048520	T0485	●
PG-T048620	T0486	●
PG-T059120	T0591	●
PG-T059220	T0592	●
PG-T059320	T0593	●
PG-T059420	T0594	●
PG-T059520	T0595	●

PG-Part #	OEM#	Type
PG-T059620	T0596	●
PG-T059720	T0597	●
PG-T059820	T0598	●
PG-T060120	T0601	●
PG-T060220	T0602	●
PG-T060320	T0603	●
PG-T060420	T0604	●
PG-T069120	T0691	●
PG-T069220	T0692	●
PG-T069320	T0693	●
PG-T069420	T0694	●
PG-T078120	T0781	●
PG-T078220	T0782	●
PG-T078320	T0783	●
PG-T078420	T0784	●
PG-T078520	T0785	●
PG-T078620	T0786	●



PG-Part #	OEM#	Type
PG-LC11BK	-	●
PG-LC11CL	-	●●●
PG-LC51BK	-	●
PG-LC51C	-	●
PG-LC51M	-	●
PG-LC51Y	-	●
PG-LC61BK	-	●
PG-LC61C	-	●
PG-LC61M	-	●
PG-LC61Y	-	●



PG-Part #	OEM#	Type
PG-765-0	-	●
PG-765-3	-	●
PG-769-0	-	●

All cartridge brand names, part numbers, trademarks, logos, and images are the property of their respective holder and are referred to here for descriptive and compatibility purposes only. Planet Green has no affiliation with Canon®, Hewlett Packard®, Lexmark®, Dell®, Sharp®, Compaq®, Pitney Bowes®, Epson®, Brother® or any other cartridge manufacturer.
© 2012. Planet Green Cartridges, Inc.



Cartridge Exchange Program

Have some empties to be filled? There is only one way to get them fast and cost effective without compromising quality. Take advantage of our **InksideXchange** Program to fill your product needs.

- Turn in your empty cartridges to Planet Green
- We will visually inspect & circuit test
- For every cartridge that passes, we ship a cartridge off our shelf
- Quick turnaround time, no waiting for the filling process
- All non-passing cartridges, are sent back with your order
- Cost-effective way to get product

Call us today to get started!

We Buy Empties

We continuously need virgin cores to meet our production demands. As a remanufacturer, we have the power to pay more for the cores we need. This is an opportunity for you to make top dollar on all your virgin inkjet cartridge inventory. So, if You've Got It... We Want It!

- Competitive buy-back prices
- Free shipping
- Get your request processed on-line
- Response within 24 hours of your submission
- Complete inspection statement provided
- Prompt payment process

Parts currently offered within our InksideXchange Program:

Brand	#Type	#OEM
Canon	●	BC02, BC20, BX3 , PG40, PG50, PGI5, CLI8
Canon	●●●	BC05, CL41, CL51, CL52, CLI8
Canon	●●●	CL52, CLI8
HP	●	15, 14, 20, 21, 26, 27, 29, 40, 45, 56, 60, 60XL, 74, 74XL, 92, 94, 96, 98, 366, 337, 338, 339, 363
HP	●●●	14, 17, 22, 23, 25, 28, 40CMY, 41, 49, 57, 60, 60XL, 75, 75XL, 78, 93, 95, 97, 99, 100, 102, 110, 342, 343, 344, 363
HP	●●●	16, 58, 59, 99, 100, 348, 363
HP Tank Syle	●●●	02, 10, 11, 80, 81, 83, 88 With New Chip
Lexmark and Dell	●	16, 17, 32, 34, 50, 70, 82, 400, Series 1, 2, 5, 7, 8, 9, 11
Lexmark and Dell	●●●	1, 20, 26, 27, 33, 35, 60, 80, 83, 619, Series 1, 2, 5, 6, 7, 9, 11
Lexmark and Dell	●●●	31, 90, Series 5, 7, 9
Pitney Bowes	●	765-0, 765-3, 769-0

*Other models not listed above: Brother, Sharp, Espon, Compaq, Xerox



Quality. Quality. Quality.

Online Customer Care Center

Today's business environment demands speed, accuracy and efficiency. With this in mind, we have developed our online account manager to provide you with the necessary tools and flexibility to keep your business running.

Planet Green's online account manager allows you to:

- Place and expedite orders
- Drop-ship to your customers
- Request various shipping methods
- Track order status
- Download sales and marketing materials
- Utilize cartridge and printer reference guides
- Receive email notifications regarding news & product releases
- Request quick RMA's
- Edit or update your account information



FocusInkjets.com

Planet Green is committed to your success and the success of our brand. Our dedicated Focus Brand site, Focusinkjets.com, provides dealers and consumers with easy access to an array of brand-specific educational and support tools.

For the dealer Focusinkjets.com serves as a reference guide for addressing customer inquiries concerning the remanufacturing industry and process, the "green" aspect of the Focus brand, and the cartridges available through our product line.

In addition, Focusinkjets.com aims to lessen the technical responsibilities of dealer through detailed installation and troubleshooting guides and valuable printing tips; all accessible by you or your customers.

We make it easy for you to do business with us and your customers!





Customer Care & Support

Planet Green knows that each customer's business and loyalty has to be earned. We work hard to provide our customers with the highest quality service & care possible. We endlessly train & test our staff on effective customer care techniques. They also need to be knowledgeable about the industry's current trends so they can keep you informed and on the leading edge of your business. We are here for you; so consider our customer care department a part of your own team.

- Account-specific sales & customer care representatives
- Cartridge & printer model technical support
- Marketing support
- Blind drop ship programs
- Same-day shipping
- Net payment terms with approved credit application
- Secured online ordering & account management
- Online empties purchasing and selling system
- Generic 4-color high-gloss boxes available
- Private labeling



Planet Green's Guarantee

We back every cartridge with a 100% satisfaction guarantee. We uphold our standards of quality to such a high level that we confidently guarantee, under normal use and storage conditions, your product will not only meet but exceed your expectations. You can confidently offer Planet Green's Focus Brand cartridges and watch your sales, profits and customer base grow.

Additionally, we warrant 100% that our equipment and supplies, under normal use and service conditions, are free from defects in both material and workmanship. Planet Green products will not cause damage, abnormal wear, or deterioration to units used within the standard manufacturer's specification.



At Planet Green we respect and value the statutes surrounding intellectual property. Our experienced legal team makes every effort to ensure all of our components and supplies are verified authentic, and are of the utmost quality.

Quality. Quality. Quality.

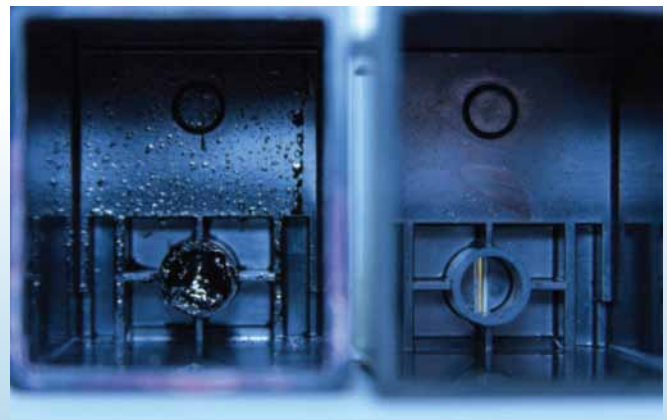
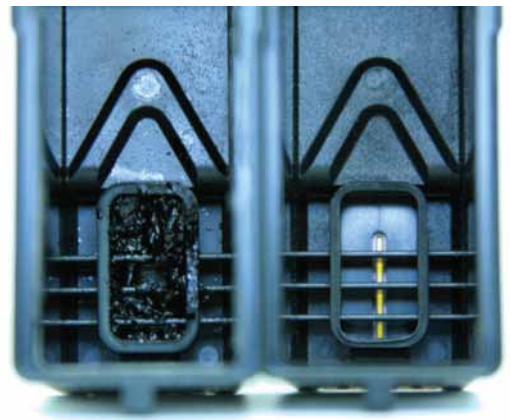
Technology Center

Here at Planet Green we have a long history of innovation. To produce the highest quality products, we have taken control of our own technological destiny. Our in-house technology center researches, designs and creates our own equipment, tools and production systems. A passion for improvement drives our dedicated engineers to ensure proper remanufacturing of our inkjets and stay informed about the original equipment manufacturer's new releases. To produce the highest quality products we are committed to investing in and taking charge in our own technology needs.



Leading the Industry

Planet Green has revolutionized the screen replacement process for the Lexmark & Dell model cartridges in our industry. We emphasize the importance of cleaning cartridges thoroughly and getting underneath that ink reservoir channel. This can only be done by replacing the filter screen.





Business Services

Direct Delivery Program (Blind Drop Ship)

Planet Green can provide direct delivery that ships our products to your customers without any reference to Planet Green. Our direct delivery programs reduce delivery time, and eliminate the need to hold inventory at your location.

Private Labeling

Private labeling is a great way to introduce quality inkjet cartridges to your customers without any development costs. With our Focus Brand cartridges, we offer multiple labeling options which include your company and contact information. For more information about our private labeling solution please contact your sales representative.

Sales & Marketing Support

We know that our success is directly related to your success. We are your sales and marketing partner. Planet Green will provide you with full sales education, training, technical support, a brand support website and marketing materials including: media kits, sales flyers, posters, signs and special graphic design services. We help you to successfully sell our products and serve your valued customers.

Personalized Service

We value our customers and ensure that we are always available to answer your questions. Every single account, small or large, will receive the absolute best service and attention. When you establish an account with Planet Green, we will allocate to you one of our professional and experienced account managers who will ensure your complete satisfaction.

Multiple Payment Options

For easy & efficient service we accept Visa, MasterCard, American Express as well as C.O.D. and wire transfers. Net Terms are available upon request and submission of a completed credit application.

International Dealer & Distribution Programs

We do business throughout the globe. We provide multiple services & and programs specifically designed for our international resellers and distributors. These programs include geographically customized pricing, shipping, packaging and even co-op marketing options.

Quality. Quality. Quality.



Our Commitment to the Environment

PLANET GREEN'S COMMITMENT TO THE ENVIRONMENT

Consider these facts:

- More than 300 million printer cartridges end up in our landfills on a yearly basis. That translates into more than \$450 million being thrown away.
- Approximately 90% of printer cartridges are recyclable, but only 20% are being recycled. Excess ink and toner residue can filter into our water supply.
- More than two ounces of oil are used for the production of every inkjet cartridge. That means we're going through more than 4,000,000 gallons of oil for single-use cartridges each year.
- The recovery and reuse of empty printer cartridges diverts millions of cubic feet of material from waste disposal, saving us the millions of tax dollars needed to pay for additional landfill management.

Planet Green recognizes that business has a direct and indirect impact on the environment. Our goal is to achieve sustainability through calculated decisions, measurable results and direct impact. As a remanufacturer, Planet Green provides an answer for people who are looking to purchase recycled products and to keep their cartridges out of landfills. We offer an alternative to the standard end-of-life model for these items by extending their lifecycle and closing the loop on their production. We take this job seriously and extend it to our business philosophy and practices.



Energy Use

Planet Green has taken proactive measures to minimize energy use in its 35,000-square-foot facility.

Packaging

An effort to reuse and source packaging material has been made with our Focus brand cartridge packaging, which is made up of over 30% recycled material.

Water Conservation

Water is an integral part of the remanufacturing process, and we have done our part to improve our process and reduce the use of this valuable resource.

Waste

Planet Green is constantly striving to recycle, reuse and reduce its waste throughout the office and warehouse.

Branding

All of our company ventures including websites, boxes, sales brochures & marketing material, even our company name, reflect our continuous environmental commitment.

Regulatory Compliance

Frequent inspections ensure compliance with regulatory codes established by City of Los Angeles Fire and Public Works department.

Planet Green's environmental policy is imbedded in the company's mission. Future generations are relying on our implementation of such simple acts and we feel strongly about your support of aftermarket products. We appreciate your efforts in working with Planet Green today for a greener tomorrow.



As President and CEO of Planet Green, I would like to offer my sincerest "Thank you" to our loyal customers. We truly appreciate and value your business. Your continued support throughout the years, attests to my belief that focus on absolute quality and integrity is the foundation to a truly long-lasting relationship.

Since Planet Green's inception nearly a decade ago, we have worked vigorously to produce a quality product that you, our valued customer, can proudly stand behind. My commitment to absolute quality, has enabled me to build a solid reputation within this industry. The steadfast commitment of our customers over the years, has afforded us the opportunity to produce over 200,000 cartridges per month, all in the United States, with the utmost standards of quality securely intact.

Of course, none of this would have been possible without the hard work, dedication and passion of the Planet Green team. Each member of our staff has embraced the philosophy of "Quality. Quality. Quality." and incorporated this credo into each and every action they undertake. I am very lucky to be working side-by-side with such extraordinary individuals, without whom I would not be where I am today.

It is my personal and professional goal to ensure that Planet Green becomes the source you demand, trust and love; for quality remanufactured inkjet cartridges for many more years to come. Planet Green is here to work harder for you than ever, because each individual within our organization realizes that without our valued customers, there would be no Planet Green.

Thank you for the confidence you have placed in us. We will do everything possible to continue to earn your trust and business.

Sincerely,

Sean Levi
President / CEO





PLANET GREEN
20724 Lassen Street
Chatsworth, CA 91311

Quality. Quality. Quality

www.PGInkjets.com



Planet Green quality Focus Brand Inkjets
are delivered to you worldwide through direct sales programs.

Worldwide Headquarters

PLANET GREEN
USA: 800-377-1093
INTL: 818-725-2596
info@PGinkjets.com