

focus[®]



Quality. Quality. Quality.

REMANUFACTURED Inkjet Cartridges

HP[®] | Dell[®] | Lexmark[®] | Canon[®] | Epson[®] | Sharp[®]
Xerox[®] | Compaq[®] | Brother[®] | Pitney Bowes[®]



TRI COLOR INKJET CARTRIDGE

Recycled Remanufactured in the USA



About Planet Green

Planet Green is an industry leader of wholesale high-quality remanufactured inkjet cartridge products. Since the company's creation close to a decade ago, quality has been, and continues to be, the focus of every single activity in the company.

Our mission is to create quality products, quality services and quality relationships. With these guiding values, Planet Green continues to be the partner of choice for customers who expect nothing but the best.

Our certified state-of-the-art 35,000-square foot facility, based in California USA, exemplifies streamlined production and remanufacturing excellence. We continue to create our own manufacturing techniques and production equipment.

Utilizing leading-edge technology and top-quality supplies enables us to uphold our high standards of quality. The passion for continuous research, development and innovation keeps us among the best of the best in an industry full of poor-quality products and sub-par remanufactures.

Our professional management team, well-trained technicians and dedicated staff are yet another reason for our continued growth and success. They are the cornerstone for producing and delivering top-quality products and superb service to satisfied customers all over the world.

Go with Planet Green and entrust your future to a company that has a true image of quality.





Planet Green's Focus Brand remanufactured Inkjet Cartridges epitomize the quality and performance that your customers expect and count on. The Focus Brand conveys a clear cut message of high standards with a commitment to environmental responsibility.

Focus Brand Cartridges are the result of continuous investment, improvement and advancement of our employees, technology, systems & procedures as well as today's customer expectations. We are tireless in discovering and innovating new ways to produce a better inkjet cartridge, and the Focus Brand Cartridges are the result of that effort.

Performance

Focus Brand Inkjet Cartridges provide consistent and reliable performance down to the last ink drop. After all, our quality control and testing departments do not work for us; they work for our customers and have their full satisfaction in mind all the time. Our concentration on perfecting just inkjet cartridges allows us to perfect the remanufacturing process and the resulting product.

Value

For many years now Planet Green's Inkjet Cartridges have been considered an effective alternative to the expensive OEM cartridges, as well as the flood of sub-par and unreliable remanufactured cartridges on the market today. Focus Brand Inkjet cartridges meet the quality & performance of the OEM's at substantial savings to your customers.

Quality

When it comes to our main philosophy, "Quality, Quality, Quality" would be it, and the proof is on the printed page. Focus Brand inkjet cartridges are produced under stringent quality-control procedures and strict testing guidelines. They are the best remanufactured inkjet cartridges on the market.





State-of-the-Art Manufacturing

Production

- 35,000 sq ft advanced remanufacturing facility
- Five separate departments with designated staff for empties, cleaning, filling, testing and packaging
- Efficient work flow and production planning
- Rigorous training program for production staff & line managers
- Organized and spotless production floor

Stringent Production Procedures and Guidelines

- Strict production policy of using ONLY Virgin cores that must pass visual & circuit testing
- Using cartridge-specific inks formulated in the USA
- All cartridge caps are ultra-sonic welded
- Extensive testing procedures for every cartridge

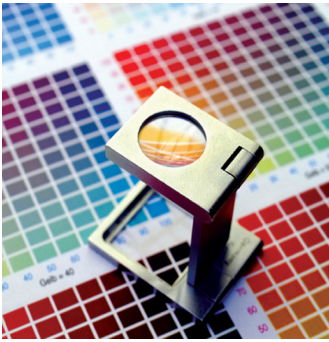
Leading-Edge Equipment and Technology.

- Colorfill 600 vacuum-filling machines for every cartridge station
- Dedicated in-house machine shop creating our own PG-Innovation line of automated equipment including:
 - High-tech cartridge cap removal
 - Black & color flushing systems
 - Automated filter/screen remover
 - Automated filter welders
 - Cartridge foam dryers
 - Centrifuge systems
 - Multiple custom-built Delran cleaning sinks
 - Numerous task-specific hand-held tools



Quality. Quality. Quality.

Research & Development



At Planet Green continuous advancement and improvement is the result of our vigorous research and development efforts. Process engineering, production planning, automation, new technological advancements, chemical analysis, product testing and advanced technical training are only a few areas of concentration and investment.



We know the importance of investing in our future. Introducing new models, staying ahead of the technological curve and forecasting industry trends enables us to stay at the top of the remanufacturing industry. We believe in never-ending research, learning and improvements. With this attitude we can ensure that our customers have every competitive advantage to succeed.

Quality Assurance

As our Research & Development team implements quality into our products and procedures, our quality assurance team ensures that quality is consistent and guaranteed. The QA team is set up as an independent department with only the interest and expectations of the customer in mind. The proof of this set-up is demonstrated in every printed sheet that uses Planet Green cartridges.

Having solid knowledge of the inner workings of every cartridge allows us to construct our QA & testing procedures to make certain our cartridges perform to the same specifications as the original equipment manufacture brand. Testing includes lifetime performance, duration, color breadth, and page yields.

QA Highlights

- Independent Equipment Development
- Impartial Laboratory Testing
- Pre-Certification of Vendor Supplies and Material
- Lot Inspections of Supplies and Materials
- Every Cartridge is print-tested before Packaging
- In-House Production of all Inkjets
- No Outsourcing of Units
- Monthly Quality and Procedural Evaluations
- Yearly Vendor Re-Qualification Testing





Product Catalog

Hewlett Packard® >>>

PG Part#	OEM#	Type	ml*	Page Yield**	Description
PG-C8721	02	●	20	660	Remanufactured Ink Cartridge, Black (High Yield) New Chip
PG-C8771	02	●	11	400	Remanufactured Ink Cartridge, Cyan (High Yield) New Chip
PG-C8772	02	●	11	370	Remanufactured Ink Cartridge, Magenta (High Yield) New Chip
PG-C8773	02	●	11	500	Remanufactured Ink Cartridge, Yellow (High Yield) New Chip
PG-C8774	02	●	11	240	Remanufactured Ink Cartridge, Light Cyan (High Yield) New Chip
PG-C8775	02	●	11	240	Remanufactured Ink Cartridge, Light Magenta (High Yield) New Chip
PG-C4844	10	●	69	1750	Remanufactured Ink Cartridge, Black (High Yield) New Chip
PG-C4841	10	●	28	1750	Remanufactured Ink Cartridge, Cyan New Chip
PG-C4842	10	●	28	1750	Remanufactured Ink Cartridge, Yellow New Chip
PG-C4843	10	●	28	1750	Remanufactured Ink Cartridge, Magenta New Chip
PG-C4836	11	●	28	1750	Remanufactured Ink Cartridge, Cyan New Chip
PG-C4837	11	●	28	1750	Remanufactured Ink Cartridge, Magenta New Chip
PG-C4838	11	●	28	1750	Remanufactured Ink Cartridge, Yellow New Chip
PG-C6615	15	●	25	500	Remanufactured Ink Cartridge, Black
PG-C1816	16	●●●	22	210	Remanufactured Ink Cartridge, Photo
PG-C6625	17	●●●	15	480	Remanufactured Ink Cartridge, Tri-Color CMY
PG-C6628	19	●	30	480	Remanufactured Ink Cartridge, Black
PG-C6614	20	●	28	500	Remanufactured Ink Cartridge, Black
PG-C9351	21	●	10	190	Remanufactured Ink Cartridge, Black
PG-C9352	22	●●●	8	165	Remanufactured Ink Cartridge, Tri-Color CMY
PG-C1823	23	●●●	38	620	Remanufactured Ink Cartridge, Tri-Color CMY
PG-51625	25	●●●	19	640	Remanufactured Ink Cartridge, Tri-Color CMY
PG-51626	26	●	40	790	Remanufactured Ink Cartridge, Black
PG-C8727	27	●	10	280	Remanufactured Ink Cartridge, Black
PG-C8728	28	●●●	8	240	Remanufactured Ink Cartridge, Tri-Color CMY
PG-51629	29	●	40	720	Remanufactured Ink Cartridge, Black
PG-51641	41	●●●	38	460	Remanufactured Ink Cartridge, Tri-Color CMY
PG-51645	45	●	42	930	Remanufactured Ink Cartridge, Black
PG-51649	49	●●●	22	350	Remanufactured Ink Cartridge, Tri-Color CMY
PG-C6656	56	●	19	450	Remanufactured Ink Cartridge, Black
PG-C6657	57	●●●	17	390	Remanufactured Ink Cartridge, Tri-Color CMY
PG-C6658	58	●●●	17	140	Remanufactured Ink Cartridge, Photo
PG-C9359	59	●●●	17	100	Remanufactured Ink Cartridge, Gray Photo

Quality. Quality. Quality.



PG Part#	OEM#	Type	ml*	Page Yield**	Description
PG-CC640	60	●	5	200	Remanufactured Ink Cartridge, Black
PG-CC643	60	●●●	11	165	Remanufactured Ink Cartridge, Color
PG-CB335	74	●	5	200	Remanufactured Ink Cartridge, Black
PG-CB336	74XL	●	18	750	Remanufactured Ink Cartridge, Black (High Capacity)
PG-CB337	75	●●●	4	170	Remanufactured Ink Cartridge, Color
PG-CB338	75XL	●●●	12	520	Remanufactured Ink Cartridge, Color (High Capacity)
PG-C6578	78	●●●	38	560	Remanufactured Ink Cartridge, Color
PG-C4872	80	●	175	2200	Remanufactured Wide Format Ink Cartridge, Cyan New Chip
PG-C4874	80	●	175	2200	Remanufactured Wide Format Ink Cartridge, Magenta New Chip
PG-C4873	80	●	175	2200	Remanufactured Wide Format Ink Cartridge, Yellow New Chip
PG-C4871	80XL	●	350	4400	Remanufactured Wide Format Ink Cartridge, Black (High Yield) New Chip
PG-C4846	80XL	●	350	4400	Remanufactured Wide Format Ink Cartridge, Cyan (High Yield) New Chip
PG-C4847	80XL	●	350	4400	Remanufactured Wide Format Ink Cartridge, Magenta (High Yield) New Chip
PG-C4848	80XL	●	350	4400	Remanufactured Wide Format Ink Cartridge, Yellow (High Yield) New Chip
PG-C4930	81	●	680	1000	Remanufactured Wide Format Ink Cartridge, Black New Chip
PG-C4931	81	●	680	1000	Remanufactured Wide Format Ink Cartridge, Cyan New Chip
PG-C4932	81	●	680	1000	Remanufactured Wide Format Ink Cartridge, Magenta New Chip
PG-C4933	81	●	680	1000	Remanufactured Wide Format Ink Cartridge, Yellow New Chip
PG-C4934	81	●	680	1000	Remanufactured Wide Format Ink Cartridge, Lt. Cyan New Chip
PG-C4935	81	●	680	1000	Remanufactured Wide Format Ink Cartridge, Lt. Magenta New Chip
PG-C4940	83	●	680	1000	Remanufactured Wide Format Ink Cartridge, Black New Chip
PG-C4941	83	●	680	1000	Remanufactured Wide Format Ink Cartridge, Cyan New Chip
PG-C4942	83	●	680	1000	Remanufactured Wide Format Ink Cartridge, Magenta New Chip
PG-C4943	83	●	680	1000	Remanufactured Wide Format Ink Cartridge, Yellow New Chip
PG-C4944	83	●	680	1000	Remanufactured Wide Format Ink Cartridge, Lt. Cyan New Chip
PG-C4945	83	●	680	1000	Remanufactured Wide Format Ink Cartridge, Lt. Magenta New Chip
PG-C9385	88	●	20	850	Remanufactured Ink Cartridge, Black
PG-C9396	88XL	●	59	2450	Remanufactured Ink Cartridge, Black (High Yield)
PG-C9391	88XL	●	17	1700	Remanufactured Ink Cartridge, Cyan (High Yield)
PG-C9392	88XL	●	17	1980	Remanufactured Ink Cartridge, Magenta (High Yield)
PG-C9393	88XL	●	17	1540	Remanufactured Ink Cartridge, Yellow (High Yield)
PG-C9362	92	●	5	220	Remanufactured Ink Cartridge, Black
PG-C9361	93	●●●	5	220	Remanufactured Ink Cartridge, Color



Product Catalog

Hewlett Packard® >>>

PG Part#	OEM#	Type	ml*	Page Yield**	Description
PG-C8765	94	●	11	480	Remanufactured Ink Cartridge, Black
PG-C8766	95	●●●	7	330	Remanufactured Ink Cartridge, Color
PG-C8767	96	●	21	860	Remanufactured Ink Cartridge, Black
PG-C9363	97	●●●	13	560	Remanufactured Ink Cartridge, Color
PG-C9364	98	●	11	420	Remanufactured Ink Cartridge, Black
PG-C9369	99	●●●	13	130	Remanufactured Ink Cartridge, Photo
PG-C9368	100	●●●	15	80	Remanufactured Ink Cartridge, Gray Photo
PG-CB304	110	●●●	5	50	Remanufactured Ink Cartridge, Color
PG-C9362EE	336	●	8	220	Remanufactured Ink Cartridge, Black (Euro Model)
PG-C9364EE	337	●	16	420	Remanufactured Ink Cartridge, Black (Euro Model)
PG-C8765EE	338	●	16	480	Remanufactured Ink Cartridge, Black (Euro Model)
PG-C8767EE	339	●	24	860	Remanufactured Ink Cartridge, Black (Euro Model)
PG-C9361EE	342	●●●	9	220	Remanufactured Ink Cartridge, Tri-Color (Euro Model)
PG-C8766EE	343	●●●	13	330	Remanufactured Ink Cartridge, Tri-Color (Euro Model)
PG-C9363EE	344	●●●	16	560	Remanufactured Ink Cartridge, Tri-Color (Euro Model)
PG-C9369EE	348	●●●	16	130	Remanufactured Ink Cartridge, Photo (Euro Model)
PG-C8721EE	363	●	6	660	Remanufactured Ink Cartridge, Black (New Chip) Euro Model
PG-C8771EE	363	●	4	400	Remanufactured Ink Cartridge, Cyan (New Chip) Euro Model
PG-C8772EE	363	●	4	370	Remanufactured Ink Cartridge, Magenta (New Chip) Euro Model
PG-C8773EE	363	●	6	500	Remanufactured Ink Cartridge, Yellow (New Chip) Euro Model
PG-C8774EE	363	●	6	240	Remanufactured Lt. Ink Cartridge, Cyan (New Chip) Euro Model
PG-C8775EE	363	●	6	240	Remanufactured Lt. Ink Cartridge, Magenta (New Chip) Euro Model

Lexmark® >>>

PG Part#	OEM#	Type	ml*	Page Yield**	Description
PG-18C0781	1	●●●	12	190	Remanufactured Ink Cartridge, Tri-Color CMY
PG-10N0016 »	16	●	14	410	Remanufactured Ink Cartridge, Black
PG-10N0217	17	●	11	205	Remanufactured Ink Cartridge, Black (Moderate Use)
PG-15M0120	20	●●●	20	275	Remanufactured Ink Cartridge, Tri-Color CMY
PG-10N0026 »	26	●●●	12	275	Remanufactured Ink Cartridge, Tri-Color CMY
PG-10N0227	27	●●●	10	140	Remanufactured Ink Cartridge, Tri-Color CMY (Moderate Use)
PG-18C0031	31	●●●	18	135	Remanufactured Ink Cartridge, Photo

Quality. Quality. Quality.

Lexmark® >>>

PG Part#	OEM#	Type	ml*	Page Yield**	Description
PG-18C0032	32	●	12	200	Remanufactured Ink Cartridge, Black
PG-18C0033	33	●●●	14	190	Remanufactured Ink Cartridge, Tri-Color CMY
PG-18C0034	34	●	20	475	Remanufactured Ink Cartridge, Black
PG-18C0035	35	●●●	18	450	Remanufactured Ink Cartridge, Tri-Color CMY
PG-17G0050 »	50	●	32	410	Remanufactured Ink Cartridge, Black
PG-17G0060 »	60	●●●	20	275	Remanufactured Ink Cartridge, Tri-Color CMY
PG-12A1970 »	70	●	32	410	Remanufactured Ink Cartridge, Black
PG-12A1980 »	80	●●●	20	275	Remanufactured Ink Cartridge, Tri-Color CMY
PG-18L0032 »	82	●	22	600	Remanufactured Ink Cartridge, Black
PG-18L0042 »	83	●●●	19	450	Remanufactured Ink Cartridge, Tri-Color CMY
PG-12A1990	90	●●●	20	450	Remanufactured Ink Cartridge, Photo
PG-13400HC	400	●	24	600	Remanufactured Ink Cartridge, Black
PG-13619HC	619	●●●	20	300	Remanufactured Ink Cartridge, Tri-Color CMY

Canon® >>>

PG Part#	OEM#	Type	ml*	Page Yield**	Description
PG-BC-02	-	●	27	500	Remanufactured Ink Cartridge, Black
PG-BC-05	-	●●●	18	200	Remanufactured Ink Cartridge, Color
PG-BC-20	-	●	40	900	Remanufactured Ink Cartridge, Black
PG-BX-3	-	●	25	2000	Remanufactured Ink Cartridge, Black
PG-PG-30	-	●	-	223	Remanufactured Ink Cartridge, Black
PG-CL-31	-	●●●	-	206	Remanufactured Ink Cartridge, Color
PG-PG-40	-	●	11	327	Remanufactured Ink Cartridge, Black
PG-CL-41	-	●●●	12	303	Remanufactured Ink Cartridge, Color
PG-PG-50	-	●	18	545	Remanufactured Ink Cartridge, Black
PG-CL-51	-	●●●	18	560	Remanufactured Ink Cartridge, Color
PG-CL-52	-	●●●	18	710	Remanufactured Ink Cartridge, Photo
PG-PGI-5	-	●	25	525	Remanufactured Ink Cartridge, Black
PG-CLI-8	-	●	13	525	Remanufactured Ink Cartridge, Black
PG-CLI-8	-	●	13	935	Remanufactured Ink Cartridge, Cyan
PG-CLI-8	-	●	13	715	Remanufactured Ink Cartridge, Magenta
PG-CLI-8	-	●	13	750	Remanufactured Ink Cartridge, Yellow
PG-CLI-8	-	●	13	5715	Remanufactured Ink Cartridge, Cyan Photo
PG-CLI-8	-	●	13	5780	Remanufactured Ink Cartridge, Magenta Photo



Product Catalog



PG Part#	OEM#	Type	ml*	Page Yield**	Description
PG-N5878	Series 1	●	11	-	Remanufactured Ink Cartridge, Black (Standard Yield)
PG-N5882	Series 1	●●●	10	-	Remanufactured Ink Cartridge, Color (Standard Yield)
PG-T0529»	Series 1	●	14	410	Remanufactured Ink Cartridge, Black
PG-T0530»	Series 1	●●●	12	275	Remanufactured Ink Cartridge, Color
PG-7Y743»	Series 2	●	22	600	Remanufactured Ink Cartridge, Black
PG-7Y745»	Series 2	●●●	18	450	Remanufactured Ink Cartridge, Color
PG-J5566	Series 5	●	18	-	Remanufactured Ink Cartridge, Black (Standard Yield)
PG-J5567	Series 5	●●●	13	-	Remanufactured Ink Cartridge, Color (Standard Yield)
PG-M4640	Series 5	●	23	630	Remanufactured Ink Cartridge, Black
PG-M4646	Series 5	●●●	18	560	Remanufactured Ink Cartridge, Color
PG-J4844	Series 5	●●●	18	180	Remanufactured Ink Cartridge, Photo
PG-JF333	Series 6	●●●	12	100	Remanufactured Ink Cartridge, Color
PG-DH828	Series 7	●	18	-	Remanufactured Ink Cartridge, Black (Standard Yield)
PG-DH829	Series 7	●●●	13	-	Remanufactured Ink Cartridge, Color (Standard Yield)
PG-CH883	Series 7	●	23	630	Remanufactured Ink Cartridge, Black
PG-CH884	Series 7	●●●	18	560	Remanufactured Ink Cartridge, Color
PG-FH214	Series 7	●●●	18	180	Remanufactured Ink Cartridge, Photo
PG-MJ264	Series 8	●	24	100	Remanufactured Ink Cartridge, Black
PG-MK990	Series 9	●	18	-	Remanufactured Ink Cartridge, Black (Standard Yield)
PG-MK991	Series 9	●●●	13	-	Remanufactured Ink Cartridge, Color (Standard Yield)
PG-MK992	Series 9	●	23	300	Remanufactured Ink Cartridge, Black
PG-MK993	Series 9	●●●	18	350	Remanufactured Ink Cartridge, Color
PG-MK995	Series 9	●●●	18	110	Remanufactured Ink Cartridge, Photo
PG-KX701	Series 11	●	18	-	Remanufactured Ink Cartridge, Black (Standard Yield)
PG-KX703	Series 11	●●●	13	-	Remanufactured Ink Cartridge, Color (Standard Yield)
PG-CN594	Series 11	●	23	450	Remanufactured Ink Cartridge, Black
PG-CN596	Series 11	●●●	18	400	Remanufactured Ink Cartridge, Color

All units marked with (») are packaged and sold as combo units.

- Lex 10N0016/Dell T0529
- Lex 10N0026/Dell T0530
- Lex 12A1970/17G0050
- Lex 12A1980/17G0060
- Lex 18L0032/Dell 7Y743
- Lex 18L0042/Dell 7Y745

Quality. Quality. Quality.

Epson® >>>

PG Part#	OEM#	Type	ml*	Page Yield**	Description
PG-T048120	-	●	14	450	Remanufactured Ink Cartridge, Black
PG-T048220	-	●	14	430	Remanufactured Ink Cartridge, Cyan
PG-T048320	-	●	14	430	Remanufactured Ink Cartridge, Magenta
PG-T048420	-	●	14	430	Remanufactured Ink Cartridge, Yellow
PG-T048520	-	●	14	430	Remanufactured Ink Cartridge, Light Cyan
PG-T048620	-	●	14	430	Remanufactured Ink Cartridge, Light Magenta
PG-T060120	-	●	14	400	Remanufactured Ink Cartridge, Black
PG-T060220	-	●	14	600	Remanufactured Ink Cartridge, Cyan
PG-T060320	-	●	14	600	Remanufactured Ink Cartridge, Magenta
PG-T060420	-	●	14	600	Remanufactured Ink Cartridge, Yellow

Sharp® >>>

PG Part#	OEM#	Type	ml*	Page Yield**	Description
PG-AJ-C50B		●	32	600	Remanufactured Ink Cartridge, Black
PG-AJ-C50C		●●●	20	725	Remanufactured Ink Cartridge, Tri-Color CMY
PG-FO-21BC		●	24	1000	Remanufactured Ink Cartridge, Black
PG-FO-C60		●	16	-	Remanufactured Ink Cartridge, Black
PG-UX-22BC		●	24	1000	Remanufactured Ink Cartridge, Black
PG-UX-27CC		●●●	20	300	Remanufactured Ink Cartridge, Tri-Color CMY
PG-UX-C35B		●	11	250	Remanufactured Ink Cartridge, Black (Low Yield)
PG-UX-70		●	16	410	Remanufactured Ink Cartridge, Black

Compaq® >>>

PG Part#	OEM#	Type	ml*	Page Yield**	Description
PG-337709-001	-	●	32	600	Remanufactured Ink Cartridge, Black
PG-337710-001	-	●●●	20	725	Remanufactured Ink Cartridge, Tri-Color CMY
PG-337711-001	-	●●●	20	725	Remanufactured Ink Cartridge, Photo
PG-337714-001	-	●	24	1000	Remanufactured Ink Cartridge, Black
PG-337715-001	-	●●●	20	300	Remanufactured Ink Cartridge, Tri-Color CMY



Product Catalog

Xerox® >>>

PG Part#	OEM#	Type	ml*	Page Yield**	Description
PG-8R7881	-	●	32	1075	Remanufactured Ink Cartridge, Black
PG-8R7880	-	●●●	20	240	Remanufactured Ink Cartridge, Tri-Color CMY
PG-8R12591	-	●●●	20	275	Remanufactured Ink Cartridge, Tri-Color CMY

Pitney Bowes® >>>

PG Part#	OEM#	Type	ml*	Page Yield**	Description
PG-765-0	-	●	38	7000	Remanufactured Ink Cartridge, Fluorescent Red
PG-765-3	-	●	38	8000	Remanufactured Ink Cartridge, Fluorescent Red
PG-769-0	-	●	18	500	Remanufactured Ink Cartridge, Fluorescent Red

Brother® >>>

PG Part#	OEM#	Type	ml*	Page Yield**	Description
PG-LC11BK	-	●	32	1000	Remanufactured Ink Cartridge, Black
PG-LC11CL	-	●●●	20	370	Remanufactured Ink Cartridge, Tri-Color CMY

*Ink capacity (ml) advised above is based on OEM information. Planet Green will strive to fill all of its cartridges to their highest allowable capacity where applicable.

**The "page yield" is best described as the number of pages a printer can print from a single ink cartridge and can be an important and deciding factor when it comes to which inkjet or photo all-in-one printer to purchase. The quoted page yield for a given sample document is based on an average of three identical printers printing each document continuously until the ink runs out. This is done three times per printer, using a new set of cartridges each time.

Many different variables have to be taken into account when measuring page yield:

- Content and type of document printed
- Type of paper used
- Type of printer
- Print mode and driver setting
- Software application used
- Conditions such as ambient temperature, humidity and frequency of printing
- Mixed text and graphics document

All cartridge brand names, part numbers, trademarks, logos, and images are the property of their respective holder and are referred to here for descriptive and compatibility purposes only. Planet Green has no affiliation with Canon®, Hewlett Packard®, Lexmark®, Dell®, Sharp®, Compaq®, Pitney Bowes®, Epson®, Brother® or any other cartridge manufacturer.
© 2010. Planet Green Cartridges, Inc.

Quality. Quality. Quality.

Cartridge Exchange Program

Have some empties to be filled? There is only one way to get them fast and cost effective without compromising quality. Take advantage of our InsideXchange Program to fill your product needs.

- Turn in your empty cartridges to Planet Green
- We will visually inspect & circuit test
- For every cartridge that passes, we ship a cartridge off our shelf
- Quick turnaround time, no waiting for the filling process
- All non-passing cartridges, are sent back with your order
- Cost-effective way to get product

Call us today to get started!

We Buy Empties

We continuously need virgin cores to meet our production demands. As a remanufacturer, we have the power to pay more for the cores we need. This is an opportunity for you to make top dollar on all your virgin inkjet cartridge inventory. So, if You've Got It... We Want It!

- Competitive buy-back prices
- Free shipping
- Get your request processed on-line
- Response within 24 hours of your submission
- Complete inspection statement provided
- Prompt payment process

Parts currently offered within our InsideXchange Program:

Brand	#Type	#OEM
Canon	●	BC02, BC20, BX3 , PG40, PG50, PGI5, CLI8
Canon	●●●	BC05, CL41, CL51, CL52, CLI8
Canon	●●●	CL52, CLI8
HP	●	15, 14, 20, 21, 26, 27, 29, 40, 45, 56, 60, 60XL, 74, 74XL, 92, 94, 96, 98, 366, 337, 338, 339, 363
HP	●●●	14, 17, 22, 23, 25, 28, 40CMY, 41, 49, 57, 60, 60XL, 75, 75XL, 78, 93, 95, 97, 99, 100, 102, 110, 342, 343, 344, 363
HP	●●●	16, 58, 59, 99, 100, 348, 363
HP Tank Syle	●●●	02, 10, 11, 80, 81, 83, 88 With New Chip
Lexmark and Dell	●	16, 17, 32, 34, 50, 70, 82, 400, Series 1, 2, 5, 7, 8, 9, 11
Lexmark and Dell	●●●	1, 20, 26, 27, 33, 35, 60, 80, 83, 619, Series 1, 2, 5, 6, 7, 9, 11
Lexmark and Dell	●●●	31, 90, Series 5, 7, 9
Pitney Bowes	●	765-0, 765-3, 769-0

**Other models not listed above: Brother, Sharp, Espon, Compaq, Xerox*





Online Customer Care Center

Today's business environment demands speed, accuracy and efficiency. With this in mind, we have developed our online account manager to provide you with the necessary tools and flexibility to keep your business running.

Planet Green's online account manager allows to you:

- Place and expedite orders
- Drop-ship to your customers
- Request various shipping methods
- Track order status
- Download sales and marketing materials
- Utilize cartridge and printer reference guides
- Receive email notifications regarding news & product releases
- Request quick RMA's
- Edit or update your account information



FocusInkjets.com

Planet Green is committed to your success and the success of our brand. Our dedicated Focus Brand site, Focusinkjets.com, provides dealers and consumers with easy access to an array of brand-specific educational and support tools.

For the dealer Focusinkjets.com serves as a reference guide for addressing customer inquiries concerning the remanufacturing industry and process, the "green" aspect of the Focus brand, and the cartridges available through our product line.

In addition, Focusinkjets.com aims to lessen the technical responsibilities of dealer through detailed installation and troubleshooting guides and valuable printing tips; all accessible by you or your customers.

We make it easy for you to do business with us and your customers!



Quality. Quality. Quality.

Customer Care & Support

Planet Green knows that each customer's business and loyalty has to be earned. We work hard to provide our customers with the highest quality service & care possible. We endlessly train & test our staff on effective customer care techniques. They also need to be knowledgeable about the industry's current trends so they can keep you informed and on the leading edge of your business. We are here for you; so consider our customer care department a part of your own team.

- Account-specific sales & customer care representatives
- Cartridge & printer model technical support
- Marketing support
- Blind drop ship programs
- Same-day shipping
- Net payment terms with approved credit application
- Secured online ordering & account management
- Online empties purchasing and selling system
- Generic 4-color high-gloss boxes available
- Private labeling



Planet Green's Guarantee

We back every cartridge with a 100% satisfaction guarantee. We uphold our standards of quality to such a high level that we confidently guarantee, under normal use and storage conditions, your product will not only meet but exceed your expectations. You can confidently offer Planet Green's Focus Brand cartridges and watch your sales, profits and customer base grow.

Additionally, we warrant 100% that our equipment and supplies, under normal use and service conditions, are free from defects in both material and workmanship. Planet Green products will not cause damage, abnormal wear, or deterioration to units used within the standard manufacturer's specification.

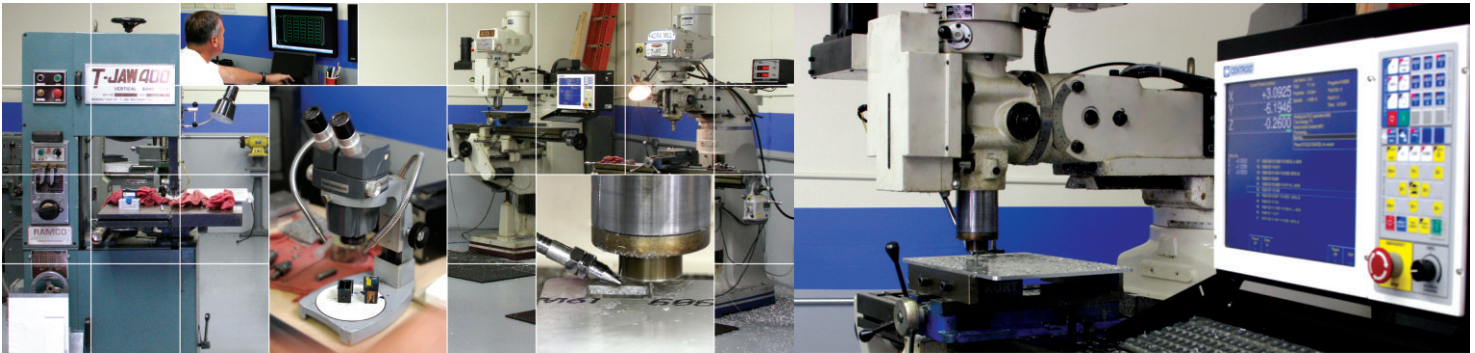


At Planet Green we respect and value the statutes surrounding intellectual property. Our experienced legal team makes every effort to ensure all of our components and supplies are verified authentic, and are of the utmost quality.



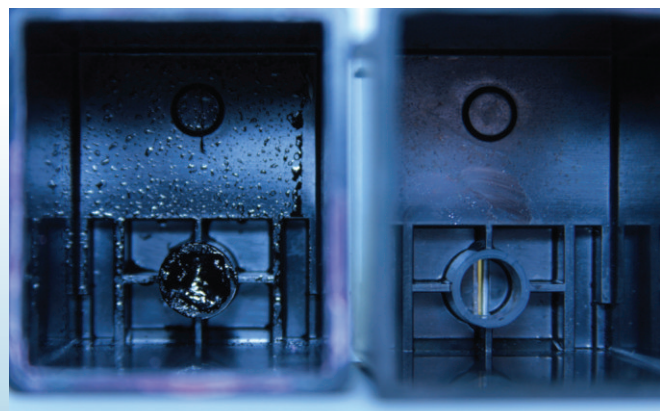
Technology Center

Here at Planet Green we have a long history of innovation. To produce the highest quality products, we have taken control of our own technological destiny. Our in-house technology center researches, designs and creates our own equipment, tools and production systems. A passion for improvement drives our dedicated engineers to ensure proper remanufacturing of our inkjets and stay informed about the original equipment manufacturer's new releases. To produce the highest quality products we are committed to investing in and taking charge in our own technology needs.



Leading the Industry

Planet Green has revolutionized the screen replacement process for the Lexmark & Dell model cartridges in our industry. We emphasize the importance of cleaning cartridges thoroughly and getting underneath that ink reservoir channel. This can only be done by replacing the filter screen.



Quality. Quality. Quality.

Business Services

Direct Delivery Program (Blind Drop Ship)

Planet Green can provide direct delivery that ships our products to your customers without any reference to Planet Green. Our direct delivery programs reduce delivery time, and eliminate the need to hold inventory at your location.

Private Labeling

Private labeling is a great way to introduce quality inkjet cartridges to your customers without any development costs. With our Focus Brand cartridges, we offer multiple labeling options which include your company and contact information. For more information about our private labeling solution please contact your sales representative.

Sales & Marketing Support

We know that our success is directly related to your success. We are your sales and marketing partner. Planet Green will provide you with full sales education, training, technical support, a brand support website and marketing materials including: media kits, sales flyers, posters, signs and special graphic design services. We help you to successfully sell our products and serve your valued customers.

Personalized Service

We value our customers and ensure that we are always available to answer your questions. Every single account, small or large, will receive the absolute best service and attention. When you establish an account with Planet Green, we will allocate to you one of our professional and experienced account managers who will ensure your complete satisfaction.

Multiple Payment Options

For easy & efficient service we accept Visa, MasterCard, American Express as well as C.O.D. and wire transfers. Net Terms are available upon request and submission of a completed credit application.

International Dealer & Distribution Programs

We do business throughout the globe. We provide multiple services & and programs specifically designed for our international resellers and distributors. These programs include geographically customized pricing, shipping, packaging and even co-op marketing options.



Our Commitment to the Environment



PLANET GREEN'S COMMITMENT TO THE ENVIRONMENT

Consider these facts:

- More than 300 million printer cartridges end up in our landfills on a yearly basis. That translates into more than \$450 million being thrown away.
- Approximately 90% of printer cartridges are recyclable, but only 20% are being recycled. Excess ink and toner residue can filter into our water supply.
- More than two ounces of oil are used for the production of every inkjet cartridge. That means we're going through more than 4,000,000 gallons of oil for single-use cartridges each year.
- The recovery and reuse of empty printer cartridges diverts millions of cubic feet of material from waste disposal, saving us the millions of tax dollars needed to pay for additional landfill management.

Planet Green recognizes that business has a direct and indirect impact on the environment. Our goal is to achieve sustainability through calculated decisions, measurable results and direct impact. As a remanufacturer, Planet Green provides an answer for people who are looking to purchase recycled products and to keep their cartridges out of landfills. We offer an alternative to the standard end-of-life model for these items by extending their lifecycle and closing the loop on their production. We take this job seriously and extend it to our business philosophy and practices.



Energy Use

Planet Green has taken proactive measures to minimize energy use in its 30,000-square-foot facility.

Packaging

An effort to reuse and source packaging material has been made with our Focus brand cartridge packaging, which is made up of over 30% recycled material.

Water Conservation

Water is an integral part of the remanufacturing process, and we have done our part to improve our process and reduce the use of this valuable resource.

Waste

Planet Green is constantly striving to recycle, reuse and reduce its waste throughout the office and warehouse.

Branding

All of our company ventures including websites, boxes, sales brochures & marketing material, even our company name, reflect our continuous environmental commitment.

Regulatory Compliance

Frequent inspections ensure compliance with regulatory codes established by City of Los Angeles Fire and Public Works department.

Planet Green environmental policy is imbedded in the company's mission. Future generations are relying on our implementation of such simple acts and we feel strongly about your support of aftermarket products. We appreciate your efforts in working with Planet Green today for a greener tomorrow.

Quality. Quality. Quality.



As President and CEO of Planet Green, I would like to offer my sincerest "Thank you" to our loyal customers. We truly appreciate and value your business. Your continued support throughout the years, attests to my belief that focus on absolute quality and integrity is the foundation to a truly long-lasting relationship.

Since Planet Green's inception nearly a decade ago, we have worked vigorously to produce a quality product that you, our valued customer, can proudly stand behind. My commitment to absolute quality, has enabled me to build a solid reputation within this industry. The steadfast commitment of our customers over the years, has afforded us the opportunity to produce over 200,000 cartridges per month, all in the United States, with the utmost standards of quality securely intact.

Of course, none of this would have been possible without the hard work, dedication and passion of the Planet Green team. Each member of our staff has embraced the philosophy of "Quality. Quality. Quality." and incorporated this credo into each and every action they undertake. I am very lucky to be working side-by-side with such extraordinary individuals, without whom I would not be where I am today.

It is my personal and professional goal to ensure that Planet Green becomes the source you demand, trust and love; for quality remanufactured inkjet cartridges for many more years to come. Planet Green is here to work harder for you than ever, because each individual within our organization realizes that without our valued customers, there would be no Planet Green.

Thank you for the confidence you have placed in us. We will do everything possible to continue to earn your trust and business.

Sincerely,

Sean Levi
President / CEO





PLANET GREEN
20724 Lassen Street
Chatsworth, CA 91311

Quality. Quality. Quality

www.PGinkjets.com



Planet Green quality Focus Brand Inkjets are delivered to you worldwide through our direct sales programs and valued distributor partners

US Headquarters

PLANET GREEN
USA: 800-377-1093
INTL: 818-725-2596
info@PGinkjets.com

Authorized Distributors

Netherlands & Belgium
FREQUENT FILLER
Phone: +31 20 4277952
www.FrequentFiller.nl

Germany
COMPATECH GmbH
Phone: +49 202 24290-66
www.Compattech.de

Australia
TONER ON DEMAND
Phone: +61 7 5482 5532
www.Tonerondemand.com.au